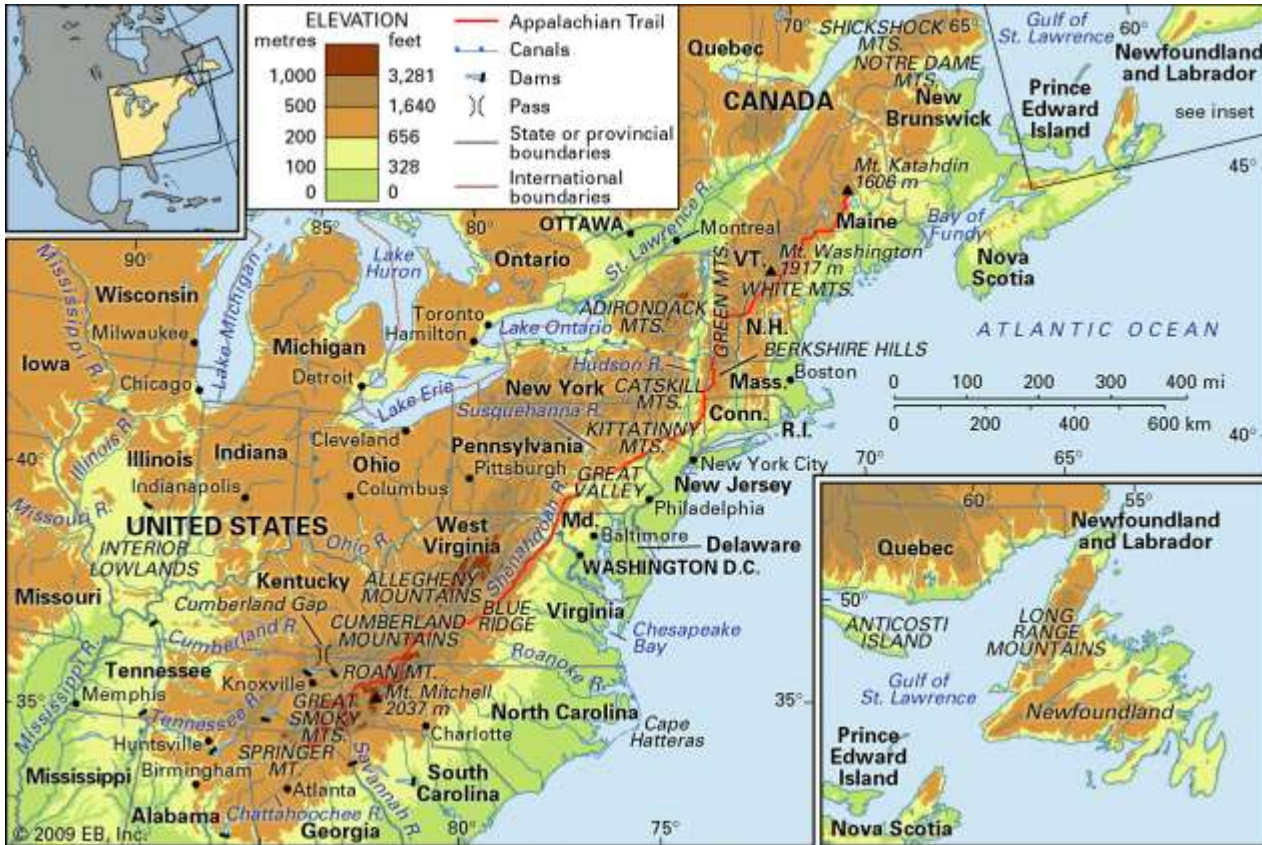


## LES APPALACHES : UNE PERIPHERIE INTERIEURE ?



### Doc 1 cf. notice Wikipédia Appalachia en anglais

<https://en.wikipedia.org/wiki/Appalachia>

### Doc 2 : quelques cartes socio-démo- économiques des Appalaches issues d'une étude récente détaillée

#### THE APPALACHIAN REGION: A DATA OVERVIEW FROM THE 2015-2019 AMERICAN COMMUNITY SURVEY

Kelvin Pollard , Linda A. Jacobsen , Population Reference Bureau

Prepared for the Appalachian Regional Commission Under Contract #CO-20132-20

June 2021

Appalachian Regional Commission invests in Appalachia's economic future by providing grants, publishing research, and sponsoring learning experiences – all to help the Region's communities

#### Pour la lecture des cartes

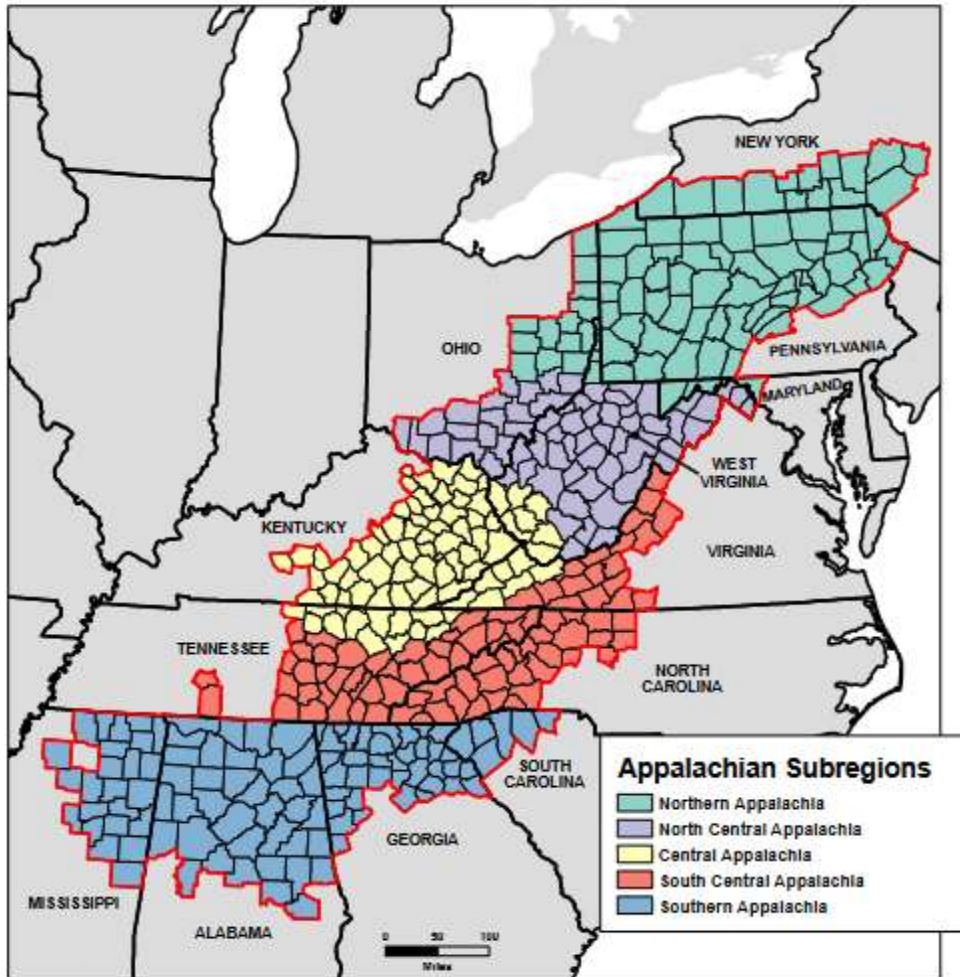
Se référer à la moyenne US qui constitue un seuil dans les légendes

High School diploma = niveau bac.

Broadband internet = accès internet

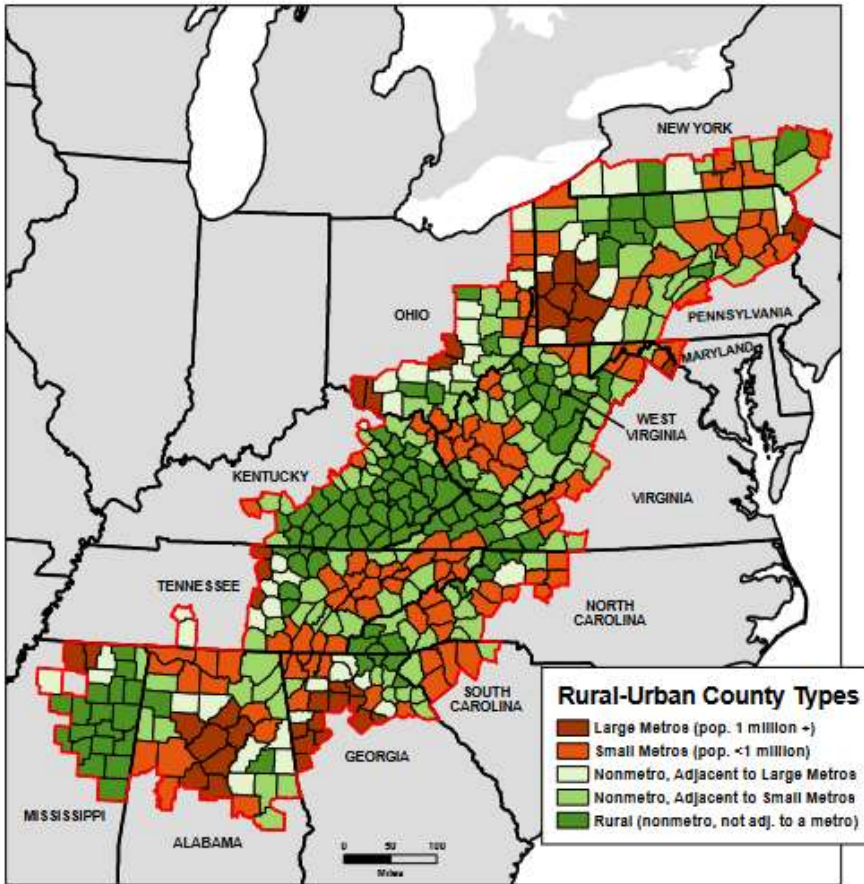
Mean household income = revenu moyen par ménage

Figure B.1: Appalachian Subregions

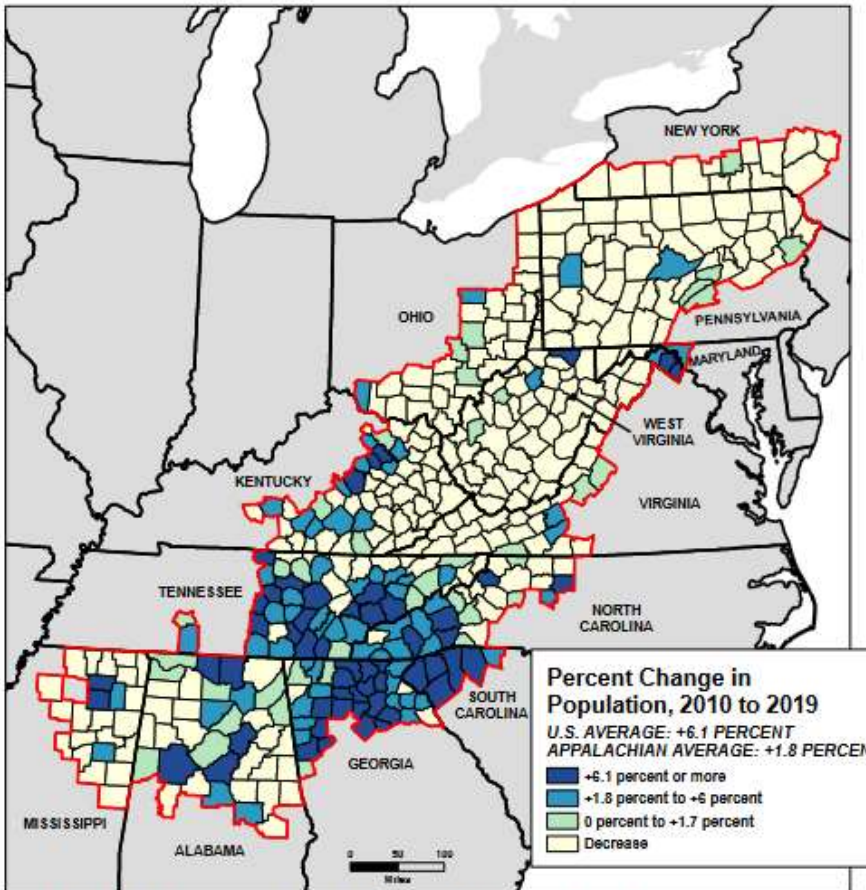


Map Title: Appalachian Subregions  
Data Source: Appalachian Regional Commission.

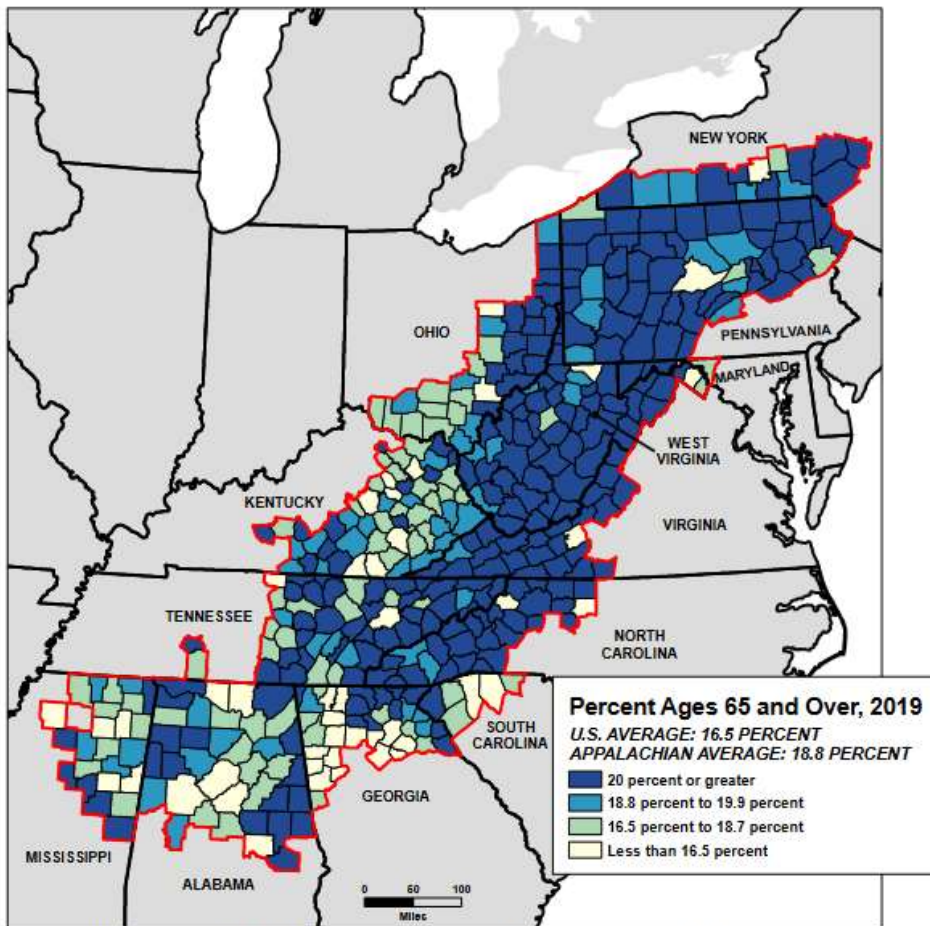




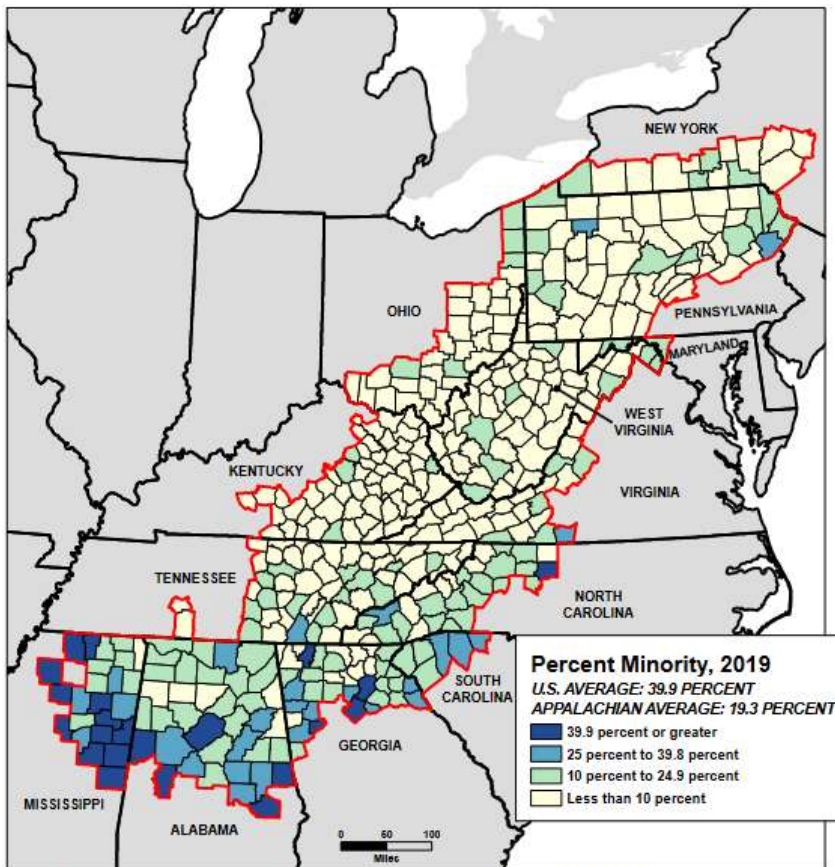
Map Title: Rural-Urban County Types in the Appalachian Region  
 Data Source: USDA, Economic Research Service, 2013 Urban Influence Codes condensed by ARC.



Map Title: Population Change in the Appalachian Region, July 1, 2010 to July 1, 2019  
 Data Source: U.S. Census Bureau, Vintage 2019 Population Estimates.

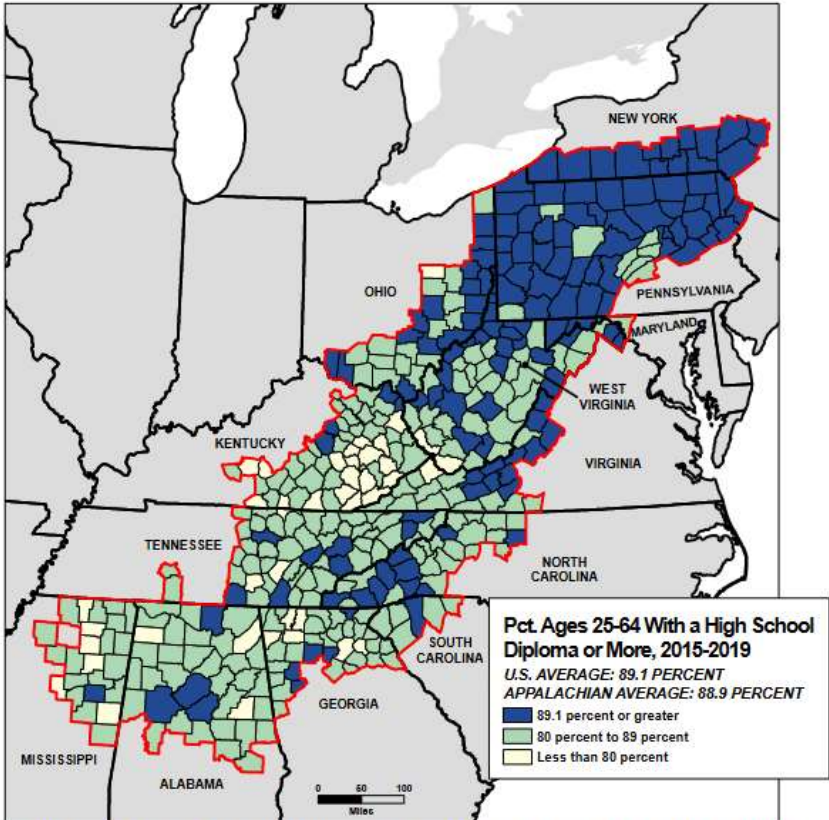


Map Title: Percent of Population in the Appalachian Region Ages 65 and Over, July 1, 2019  
 Data Source: U.S. Census Bureau, Vintage 2019 Population Estimates.

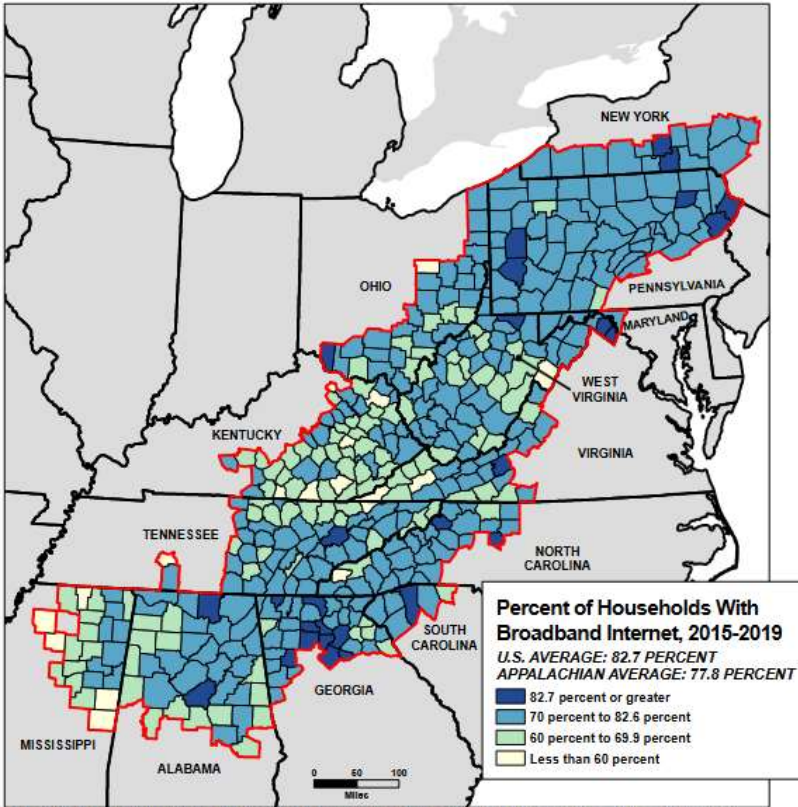


Map Title: Percent of Population in the Appalachian Region That Is Minority, July 1, 2019  
 Data Source: U.S. Census Bureau, Vintage 2019 Population Estimates.

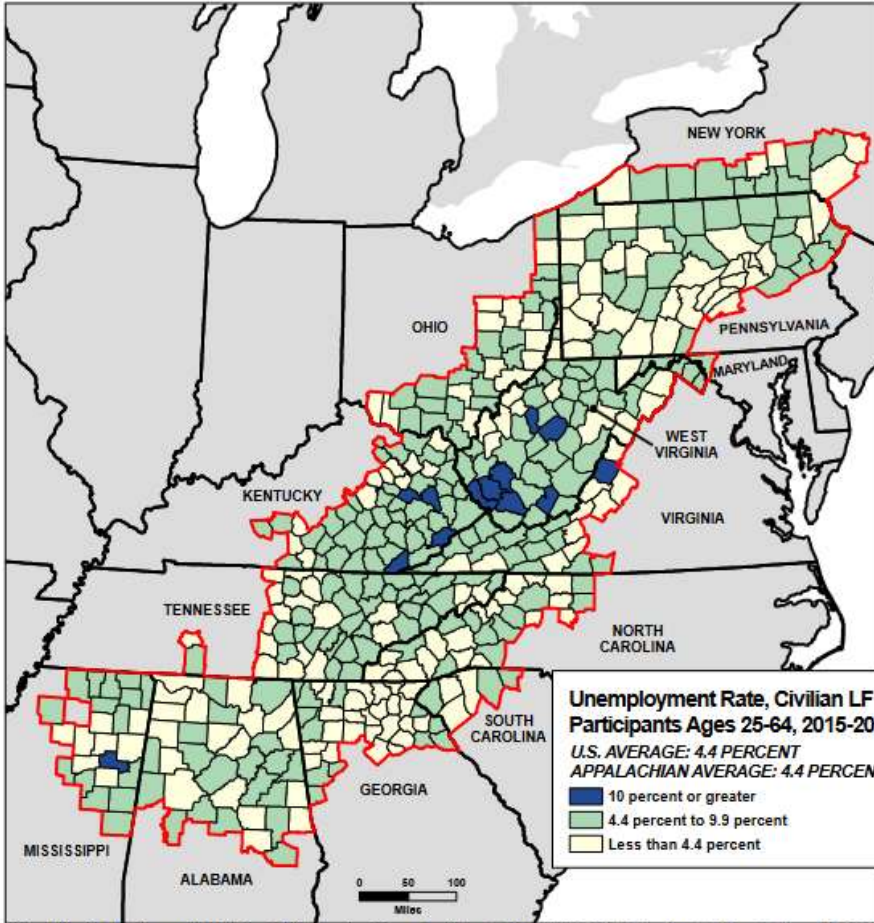




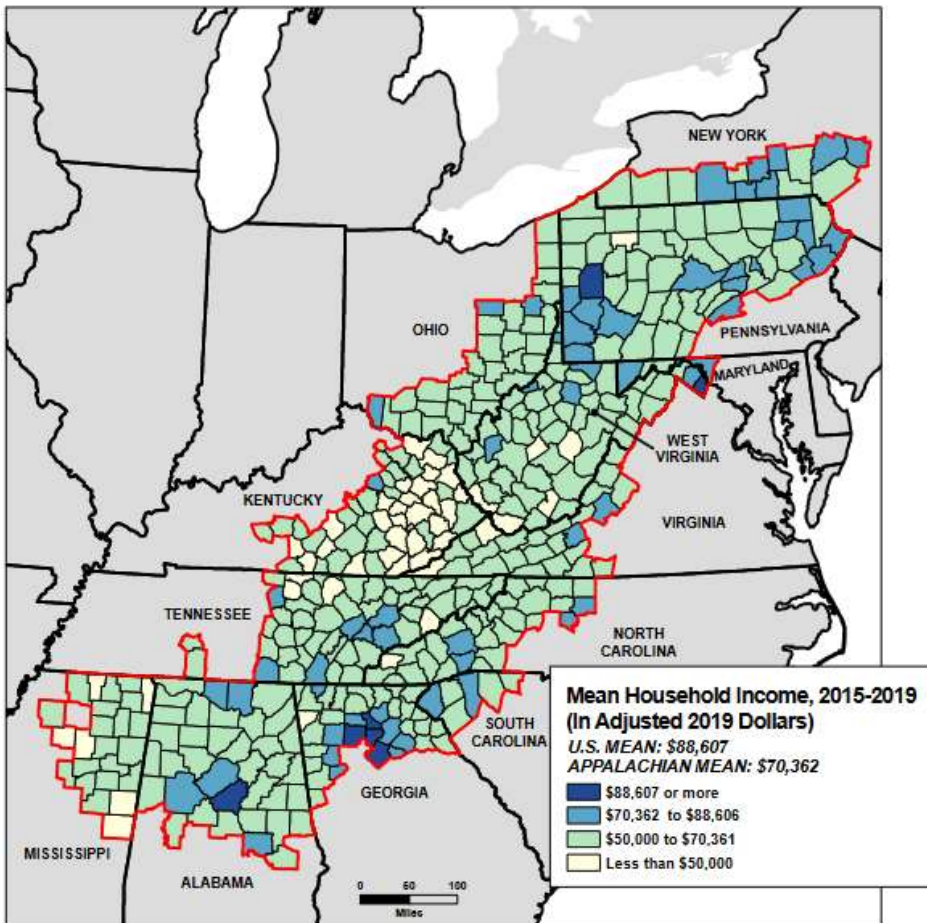
Map Title: Percent of Persons Ages 25 to 64 in the Appalachian Region With a High School Diploma or More, 2015-2019  
 Data Source: U.S. Census Bureau, 2015-2019 American Community Survey.  
 2019



Map Title: Percent of Households in the Appalachian Region With a Broadband Internet Subscription, 2015-2019  
 Data Source: U.S. Census Bureau, 2015-2019 American Community Survey.



Map Title: Unemployment Rate for Civilian Labor Force Participants Ages 25 to 64 in the Appalachian Region, 2015-2019



Map Title: Mean Household Income in the Appalachian Region (In Adjusted 2019 Dollars), 2015-2019



**Doc 3 : A Historical and Contemporary Discussion of the Tourism Industry in the Appalachian Region of the United States, with an analysis on its economic and sociological effects**

Nick Tarpey ,Junior, Geography/Urban Studies,2018

( analyser surtout la seconde moitié, après 1980 mais lire aussi la première partie)

<https://tuljournals.temple.edu/index.php/perceptions/article/download/57/77/>

**Doc 4 : Coal Mining's Blow on the Appalachian Economy**

[http://understory.sites.gettysburg.edu/es225\\_a\\_2018/coal-minings-blow-on-the-appalachian-economy/](http://understory.sites.gettysburg.edu/es225_a_2018/coal-minings-blow-on-the-appalachian-economy/)

**Doc 5 : Back To The Land: The Future Challenge And Opportunity Of Appalachian Agriculture**

By [Liam Niemeyer, Ohio Valley](#), 2020

<https://wfpl.org/back-to-the-land-the-future-challenge-and-opportunity-of-appalachian-agriculture/>



**ASAP = Appalachian Sustainable Agriculture Project**

**Doc 6 : Appalachian Forest National Heritage Area**

<https://www.nps.gov/places/appalachian-forest-national-heritage-area.htm>

**Doc 7: Former Coal Mining Towns Turn to Tourism**

April Simpson ,Stateline Article, March 11, 2019

<https://www.pewtrusts.org/fr/research-and-analysis/blogs/stateline/2019/03/11/former-coal-mining-towns-turn-to-tourism>

**Doc 8 : West Virginia: A case study on the impact of population decline**

David M. Shribman | Milwaukee Journal Sentinel , 2021 ?

<https://eu.jsonline.com/story/news/solutions/2021/07/14/west-virginia-case-study-impact-population-decline/7965589002/>